

# 10 YEARS

## Supporting Farmers, Feeding Neighbors



### A Decade of the Pennsylvania Agricultural Surplus System

With so much food produced in Pennsylvania, there's no reason anyone in our state should experience hunger. And yet, more than **1.7 million Pennsylvanians** do.

The Pennsylvania Agricultural Surplus System (PASS) serves as a vital link between agricultural producers and the state's charitable food network. PASS was created to establish a mechanism and pathway for surplus agricultural products in Pennsylvania to be distributed within the charitable food network while fairly compensating farmers for their costs related to harvesting, processing, packaging, and transporting the food. Without PASS, these food products would likely go unharvested or be sent to a landfill.

For the last decade, we've been forging partnerships with farmers, processors and distributors to support local farmers and economies, reduce food waste, and provide Pennsylvanians with the fresh, local foods they need to thrive.



\*Ninety-nine of the 259 PASS vendors are aggregators, representing at least **2,228 individual PA farms**.

"It's been great knowing our products and our work with Central PA Food Bank helps feed others in our community and surrounding areas in the region. We value the opportunity to help provide nutritious vegetables to those in need. The PASS program has greatly helped our business."

- Jackie Nell, Nell Produce



PASS enables vendors to grow their businesses, strengthen community ties, and enhance their visibility. Participating vendors reported **stabilized revenue**, **expanded market access**, and **reduced food waste**.

Including individual farms that work with aggregators, PASS has helped support over **2,200 farms** from across Pennsylvania, with **unique partners in 58 counties**. Six vendors have participated in all ten years of the program, with another **60 vendors participating five years or longer**.

Vendors range in size from small family farms that often rely on program revenue for stability, to larger businesses that can leverage their scale to meet the programs' demands.

Products provided span staple goods such as produce, dairy, meat, and eggs, as well as value-added items like honey, kombucha, shelf-stable yogurt, and processed tomatoes.

**"We've started to produce and offer a wider variety of products as the food bank helps balance our production needs with our other customers and helps us ensure we have enough work to employ two full-time cheese makers and three part-time packaging employees."**

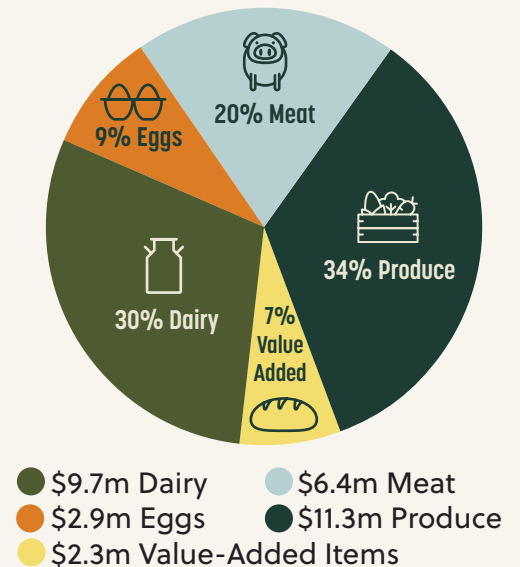
- Jason Frye, Pleasant Lane Farm

**"It has enabled us to sell the excess, recovering funds for harvesting and packing, so we're not taking a loss on something we have too much of."**

- Aeros Lillstrom, Who Cooks for You Farm

### Dollars Spent by Vendor Sector

FY15-FY25



**78%** of vendors agree that Feeding Pennsylvania has helped them access new markets.\*

**75%** of vendors indicated that partnerships with Feeding Pennsylvania helped them minimize losses by providing a reliable market for surplus goods.\*

## Economic Impact: A One-Year Snapshot

In the 2023–2024 fiscal year alone, PASS generated a total economic output of \$9.6 million across the Commonwealth. PASS contributed \$3.5 million in value added to the state's economy and \$1.9 million in labor income, highlighting its significant role in sustaining jobs and livelihoods.\*

**\$9.6m**

Total Economic Output

**\$3.5m**

Value Added to the PA Economy

**\$1.9m**

Labor Income

**"The ripple effects are clear—transportation companies, packaging suppliers, and even brokers benefit from our increased production."**

- Fatma Baysal, Country Food LLC

\*Source: "The Economic Impact of Feeding Pennsylvania: PASS and LFPA Programs Fiscal Year 2023–2024" by Olivia Karoly and Lauren Iversen, December 2024, a report developed as part of a senior capstone project for CED 475: Integrated Capstone Experience in Community, Environment, and Development at Penn State University.